

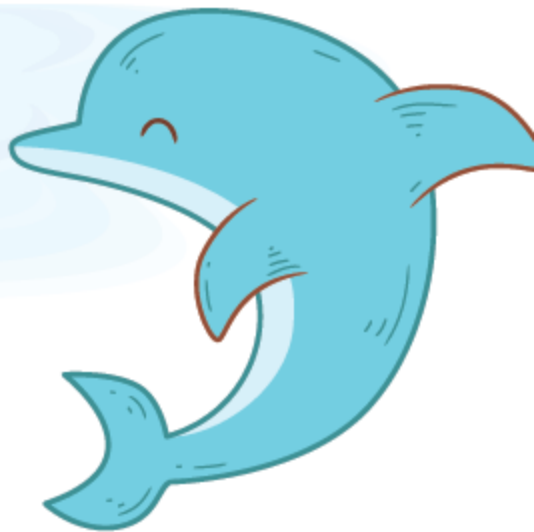
1. Read the text and write (T) true or (F) false.

a) Dolphins aren't very smart. _____

b) Dolphins can't stay under water too long. _____

c) There are no grey dolphins. _____

d) Fishing nets are dangerous for dolphins. _____



2. Read the text again and complete the sentences.

a) Some people say, dolphins are “dogs of the sea,” because _____.

b) Dolphins can give birth to baby dolphins because they _____.

c) Dolphins mostly jump out the sea to _____.