

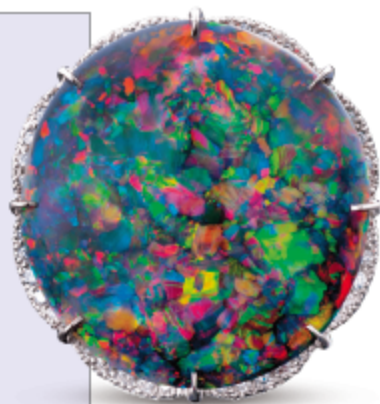
1 Complete the sentences with the bold and underlined words in the text.

- a) Places where you can buy things are called _____ .
- b) If you have _____ , it means you have enough room in a place.
- c) If you want to _____ the ground, you open a hole using a shovel.
- d) The _____ of a city or county shows how many people live there.
- e) When a person is _____ , s/he doesn't understand.
- f) A _____ is a place. It almost never rains there and it's very hot.

2 Match the sentence halves.

1. Coober Pedy is a small ☐
2. People there dig holes ☐
3. The people there also ☐
4. The homes are very ☐
5. It's easy to make small ☐
6. Visitors feel confused when ☐

- a) ...into the ground to get opals.
- b) ...cool in the summer.
- c) ...they first come to Coober Pedy.
- d) ...homes bigger homes.
- e) ...town in South Australia.
- f) ...dig homes underground.



3 Write ONE *good* thing about living underground and ONE *bad* thing about living underground.

- a) _____
- b) _____